

RANGE STANDING ORDERS

Hornsby Shooting Complex

SECTION 1 - GENERAL

These Range Standing Orders (SO's) cover the use of the range facility managed by the North Shore Regional Target Shooting Complex Management Association Inc.(NSRTSCMA) at Rosamond St. Hornsby NSW.

All Range Officers and range users are required to familiarize themselves with these Standing Orders

Each organisation using the range for firearms practice must keep a copy of these Standing Orders displayed in their clubhouse and provide all active members with a copy. Members should be advised that they must read and understand the SO's before using the range.

Any Member may request a variation of any provisions in these Standing Orders. Requests can be submitted in writing (by mail or email) to the NSRTSCMA Executive for consideration. The Executive may propose such variations as may become necessary due to legislative changes, safety audits or other matters which may come to its attention.

Revisions

These Standing Orders have been published and are effective on the date listed below:

Version 1.0– Approved August 2012 Version 1.1 (typos only) November 2012

Version 1.2- Approved July 2014

Version 2.0 – Approved 21st November 2017 Version 2.1a (Formatting changes only) Dec 2017

Version 2.2 – Approved 8th April 2019

Version 2.3 – Approved 30th December 2019

Version 2.4 – Approved 31st August 2020

Version 2.5 – Approved 22nd December 2021

SECTION 2 – RANGE FACILITY

2.1 Range Description

The Hornsby range complex has multiple ranges.

The Main (Fullbore) Range – a 14 target classification range to 800M

The Smallbore Range – a 15 target 50M range

The 100M/Pistol Range – a 20 lane 100M handgun and rimfire rifle range.

MAIN (FULLBORE) RANGE (FBR)

Location: Along the ridge in the centre of the complex facing WNW

Description: 25M to 800M classification range

No. Firing Points: 14

Firing Distances: 25, 50, 75, 100, 200, 300, 400, 500, 600, 700 & 800 metres

Approved Firearms: Category A, B, C & D rifles

Approved Calibres: Maximum Calibre 8mm centrefire.

Approved Targets: Manual or electronic targets designed and constructed of materials not liable to create ricochets or splinters.

N.S.R.T.S.C.M.A.Inc.

North Shore Regional Target Shooting Complex Management Association Inc.

SMALLBORE RANGE (SBR)

Location:	Located on the right hand side of the complex adjacent to 600M access road.
Description:	Fixed firing point 50M range with baffle wall on the right and left hand sides of the range, permitting three position shooting
Number of firing points:	15
Firing Distances	Up to 50M only
Approved firearms:	Category A long arms only
Calibres:	.22 subsonic rimfire and .177 & .22 air rifle only
Approved Targets	Manual or electronic targets designed and constructed of materials not liable to create ricochets.
Special Considerations:	The smallbore range has a system of baffles and penetration resistant perimeter fencing which permits it to operate independently of other range activities.

100M (PISTOL/UTILITY) RANGE (HMR)

Location:	Located to the left hand side of the complex adjacent to the 300M firing point, this range consists of Pistol, Bench and other covered firing points up to a maximum of 100 metres in distance. Access is via the range road and is blocked when the main range is in use beyond 300M.
Description:	100M pistol and zero range
No. of Firing points:	20
Firing Distances:	Various from 3M to 100M
Approved Pistols:	.22RF and up to .45CF and .177 air pistol
Category A & B rifles:	22RF and any pistol calibre rifle using lead projectiles at velocities of less than 1500FPS
Approved Targets:	Manual or electronic targets designed and constructed of materials not liable to create ricochets or splinters. On designated dates, metallic silhouette targets may be used in pistol competition, providing that no other range users are within the danger area.

OTHER BUILDINGS

Adjacent to the Main Range: Club Houses, storage sheds and Toilets near 700 metre firing point. Target Shed and storage containers at Butts area.

On the Smallbore Range: Combined clubhouse and covered firing point

On the 100M Pistol/Utility range: Toilets, storage containers; and 2 x 10M Air Pistol ranges within 40ft. containers.

SECTION 3 - PERSONNEL

3.1 Range Executive

The Hornsby Range complex is administered by the North Shore Regional Target Shooting Complex Management Association Inc., comprising delegates from all accredited shooting organisations which regularly use the range. NSRTSCMA is not an accredited shooting organisation

3.2 Range Officers

Range Officers are appointed by the accredited shooting organisation organising the shoot and have complete authority over all persons on the range during shooting activities. Where more than one accredited Range Officer is helping to organise a shoot, one shall be designated as Chief Range Officer by the organising body and shall be in overall charge.

Where more than one range on the complex is in use at the same time, the Range Officer in charge of the main (Fullbore) range will take precedence.

Range Officers must hold a current N.S.W shooters licence and be accredited by the appropriate discipline specific body. The Range Officer should be readily identifiable by such means as an armband, vest or other distinctive garment.

RO's have the responsibility to supervise all personnel (shooting and non-shooting alike) present on the property and may have members and/or non-members removed at his/her discretion.

3.3 Butts Officer

A Butts Officer will be appointed to be in charge of the Fullbore Range Butts area, under the authority of the Range Officer whenever the targets are maintained by personnel who mark or otherwise manually operate the targets.

The Range Officer and Butts Officer will maintain radio contact at all times.

The Butts Officer must hold a current N.S.W shooters licence.

When the Fullbore Range is in operation, but without any personnel present in the Butts area, the Range Officer may authorise the shoot to proceed without a Butts Officer being present in the Butts.

The Range Officer must ensure that the butts area is clear before commencing the shoot, ensure the butts entry door is closed and locked and that the butts range entry ramp gate is also closed and locked.

The Range Officer will ensure "DANGER, DO NOT ENTER" signs are posted adjacent to the butts shed door and butts range entry ramp gate.

SECTION 4 – RANGE OPERATIONS

4.1 Use of the Hornsby Shooting Complex:

Shooting activities: All shooting activities on the Hornsby Shooting Complex must be conducted under the auspices of a shooting organisation licensed by NSW Firearms Registry or other appropriately authorised and accredited training body. Only shooting organisations which are a member of, or approved by, NSRTSCMA may use the range.

The non-NSRTSCMA groups authorised to use the range are:

- 4.1.1 NSW Police and employees of the NSW Department of Corrective Services are authorised to possess and use firearms on this range for the purpose of training and instruction in the ordinary course of their duties.
- 4.1.2 Australian Federal Police are authorised to possess and use firearms on this range for the purpose of training and instruction in the ordinary course of their duties.
- 4.1.3 Australian Border Force officers are authorised to possess and use firearms on this range for the purpose of training and instruction in the ordinary course of their duties.
- 4.1.4 Members of the Defence Forces are authorised to possess and use firearms on this range for the purpose of training and instruction in the ordinary course of their duties.
- 4.1.5 Employees of NSW National Parks and Wildlife Services and employees of Local Land Services are authorised to possess and use firearms on this range for the purpose of training and instruction in the ordinary course of their duties as employees of those organisations.
- 4.1.6 The Firearms Safety Council of NSW is authorised to possess and use firearms on this range for the purpose of safety training and instruction.
- 4.1.7 Security personnel undertaking testing or accreditation with pistols are authorised to use the range, under the control of appropriately licenced instructors.

Authorised non-NSRTSCMA groups can only conduct practices on the range on dates and at times allocated by NSRTSCMA.

Licensed Shooters: Shooters licensed in NSW, or any other jurisdiction with reciprocal licensing and overseas visitors who have been approved by the relevant authorities may use the range in accordance with the conditions of their licence, under the auspices of an approved shooting organisation.

Unlicensed Shooters: In accordance with Section 6B of the Firearms Act, Unlicensed shooters or licensed shooters who are not authorised to possess the firearm he/she proposes to use may do so under the auspices of an approved shooting organisation. Prior to any such use, the shooter must complete a Form P650 and provide the necessary identification documentation. The Range Officer or Club Captain or other responsible officer must then sign the form in accordance with the Act. The form must be retained for audit by NSW Police.

Non-shooting activities: All possible co-operation will be extended to all emergency services. Access by police, fire and ambulance services responding to an emergency is automatically approved. From time to time, the range complex may be used by various community and emergency bodies as a staging or training area. All such use must be approved prior to the event by the NSRTSCMA executive. Access to the range or butts area by service vehicles and personnel during shooting activities must be reported to and co-ordinated with the range officer. Note that this does not apply to access to the area adjacent to the clubhouses.

4.2 Flags

A red flag must be flown from the flagpole at the main entrance to the complex when firing is being conducted on any range within the facility. Red flags are not to be flown when the range is closed. During night shoots, red flags must be brightly illuminated or replaced by red lights.

FULLBORE RANGE SPECIFIC REQUIREMENTS

- **RED** flag on the crest of the main range stop butt.
- **RED** flag at the entrance gate
- **RED** flag on the firing line until the Range Officer declares the range active.
- When electronic targets are in use, a **RED** flag must be displayed above the mantlett before shooting commences, when shooting ceases for the day, and whenever shooting is suspended
- **POSITIONAL SHOOTING**
Shooting from the standing position on the FBR is permitted only from 100M forwards

SMALLBORE RANGE SPECIFIC REQUIREMENTS

- **RED** flag at the target lane.
- **RED** flag on the clubhouse (or red light at night)
- **RED** flag at the entrance gate (or red light at night)

100M/PISTOL RANGE SPECIFIC REQUIREMENTS

- **RED** flag on the firing line.
- **RED** flag on the crest of the 100M stop butt
- **RED** flag at the entrance gate (or red light at night)

4.3 NON-APPROVED TARGETS

At no time are, glass, soft drink cans or any other non-approved or impromptu targets to be used on the range facility. Deliberately shooting at the target numbers and other non-target infrastructure on any of the ranges shall be grounds for immediate removal from the range.

4.4 RECORD OF ATTENDANCE

In accordance with the NSW Firearms Act and Regulations, each approved firearms organisation conducting a practice or competition must record the date of the activity and the name and license number of all persons shooting. These records must be in a form which is not liable to tampering and must be retained in good order for subsequent inspection when required.

Club members and other licensed visitors who are not able to produce their licence will not be permitted to shoot as this would be in contravention of the Act.

4.5 AMMUNITION

- The calibre of ammunition used is to conform to the conditions of the Range Approval.
- The use of tracer, incendiary, explosive or similar ammunition is prohibited.
- Frangible or other ammunition liable to break up on impact is prohibited
- All spent cartridge cases or spent shells must be collected and removed from the range.

4.6 PERMITTED ARCS OF FIRE

MAIN (FULLBORE) RANGE

All shooting is parallel to the centre line of the main fullbore range.

SMALLBORE RANGE

All shooting is parallel to the axis of the smallbore range.

100M/PISTOL RANGE

All shooting is parallel to the axis of the 100M/Pistol Range

4.7 FIRING TIMES

The conditions of the range license require adherence to the following firing guidelines.

- Shooting shall not commence prior to 9:00 AM (Eastern Standard Time or Eastern Daylight Saving Time as is appropriate) on any day.
- Shooting must cease by 5:00 PM under all circumstances, other than subsonic rimfire and air rifle practices on the smallbore range and subsonic rimfire practices on the pistol range, which may occur up to 10pm on any night except Sundays
- Other than as above, shooting organisations should not schedule any shooting activity to finish after 4:30PM, to avoid disputes with neighbours.
- The range may be closed at any time by NSRTSCMA, for any reason.

4.8 STORAGE OF FIREARMS

All firearms must be stored in accordance with licence requirements and safety rules when not in use on the firing point.

Firearms are not to be left unattended. Shooters are to either:

- Secure their firearms in a locked vehicle or supervised container
- Maintain personal control of the firearm or
- Designate another licensed shooter to maintain control of their firearm (e.g. while scoring)

4.9 ROAD/RANGE CLOSURE DURING RANGE OPERATIONS

Due to the configurations of the range complex specific road and range closures must be in effect during the operations of certain ranges. These closures are listed below:

ACTIVE RANGE	CLOSURE
Main (Fullbore) range beyond 300M	Access to the 100M/Pistol range is blocked during all long range shoots on the Main Range
Main (Fullbore) range beyond 600M	In addition, the gate to the road leading to the 300-600M mounds must be locked
Main (Fullbore) Range beyond 700M	In addition, the gate to the road leading to the 700M mound must be locked
100M/Pistol Range	On days designated for Metallic Silhouette competition on the pistol range, access to the fullbore butts is restricted.
100M/Pistol Range	When the 100M/Pistol Range is in operation, access to the main range forward of the 300M mound is restricted as specified under 5.3

4.10 MATCH COMPLETION

At the conclusion of all matches or practices the RO is responsible for ensuring that:

- all targets are returned to the storage shed (this can be delegated to the butts officer)
- firing points are checked for brass and other debris;
- all firearms and ammunition have been removed from the range;
- all flags are lowered; and
- range storage facilities are secured

SECTION 5 – RANGE SAFETY CONSIDERATIONS

5.1 SAFETY ZONES

The range safety template (danger area) extends into (but is not part of) the adjacent National Park. The perimeter of the danger area is signposted in co-operation with the National Parks & Wildlife Service of NSW. The original alignment of the Benowie walking track crossed the safety template and Track Closed signs advising walkers to use the alternate track are located at each point where the track entered the Range Danger Area.

5.2 SAFETY & CONDUCT OF MATCHES

All firing on the range is subject to State Firearms regulations. All firing on the ranges shall be in accordance with the safety rules defined in the National Rifle Association of Australia's Standard Shooting Rules or the equivalent rules laid down by other shooting disciplines.

- The Range Officer in charge may suspend or cancel shooting under conditions of severely reduced visibility or for any other reason the Range Officer sees fit.
- All firearms must be pointed down range when a round is chambered. Firearms may only be loaded on the firing point when the Range Officer has called commence firing.
- On all ranges at all distances, rifle bolts may only be closed with the butt to the shoulder to obviate the possibility of any shots going over the stop butt.
- Any person who believes there may be an immediate risk to people, wildlife, livestock or property may call a cease-fire but in all cases must immediately bring the matter to the attention of the Range Officer.

In addition, each shooting discipline on each range shall maintain the safety rules specific to their discipline but must conform to the general rules laid out above.

Guests and Spectators

Guests (children and adults) are the responsibility of the adult club member they came with and must remain under adult supervision at all times.

Spectators must follow all directions given to them by the Range Officer. Spectators must remain 5 meters behind any active firing line at all times.

5.3 CONCURRENT USE OF FULLBORE RANGE (FBR) AND HUNDRED METRE MULTIUSE RANGE (HMR)

Concurrent operation of the HMR and FBR can only occur by prior arrangement, either as laid down in the approved NSRTSCMA Range Use Calendar, or by agreement between the bodies wishing to use the ranges on a specified date. The NSRTSCMA Executive Officers will ratify any agreement thus reached.

Concurrent operations on the FBR and HMR are subject to the following requirements:

- When the FBR is in operation between 400M and 800M, the HMR cannot be accessed.
- When the FBR is in operation at 300M, the HMR can be accessed and shooting on the HMR can occur at any distance.

N.S.R.T.S.C.M.A.Inc.

North Shore Regional Target Shooting Complex Management Association Inc.

- When the HMR multiuse range is operational (red flag/s flying) and shooting at short range on the FBR is occurring, restrictions apply to use of the FBR as set out in the table following.

100M Fullbore mound

100m HMR in use at 10m – 25m Permitted Firing Points lanes 8 to 14

100m HMR in use at over 25m Closed

200M Fullbore mound

100m HMR in use at all distances Permitted Firing Points lanes 1 to 14

Note that the track adjacent to the Southern berm on the FBR cannot be used forward of the 300M mound while the HMR is in operation.

When simultaneous use of the HMR at any range and the FBR at less than 300M occurs, the Range Officers on both ranges must be able to maintain radio contact at all times.

When simultaneous shooting is occurring as specified above, the Range Officer on the HMR must ensure that the Range Officer on the FBR is aware of the distances being shot on the HMR and receive positive confirmation that the FBR is being used in accordance with the above restrictions.

When the HMR is operating and the FBR butts are manned, all personnel in the butts must remain under the cover of the mantlett at all times due to the possibility of high angle shots from the HMR dropping in front of the FBR backstop. When metallic silhouette matches are being shot on the HMR, access to the FBR butts is restricted to times when the HMR Range Officer issues an all-clear for a specified time.

5.4 TRAFFIC AND PARKING

For safety and maintenance reasons, all vehicles which enter the range complex must obey the general rules laid down here and any specific signage displayed.

- There is a general range speed limit of 15 kph.
- Under NO circumstances are any wheeled vehicles to be driven over any firing point.
- Signs displaying parking restrictions must be obeyed.

Infractions by any person will be referred to the group with which they are associated, and repeated offences may lead to the individual or the group being barred from the range.

5.4 COMMUNICATIONS

When the main (Fullbore) range is in use, UHF Radio Communications are to be maintained between the firing point and butts. The main range normal operating channel is set on the day of each practice. Other radio communications devices can only be used on the range with the approval of the Range Officer.

When the Main Range is in operation (up to 300M) and the 100M/Pistol range is simultaneously in use, both range officers are to co-operate as necessary to ensure safety is maintained.

5.4 HEARING PROTECTION

Hearing protection for all attendees at the range in close proximity to an active firing line is strongly recommended. The Range Officer is to remind any person without hearing protection within 5M of the firing point of the danger of hearing loss.

5.5 ALCOHOL/DRUGS/HEALTH

Any person deemed by the Range Officer to be under the influence of alcohol or drugs will not be permitted to shoot.

Shooters should be encouraged to wash their hands after shooting and before eating due to the hazard posed by the possible ingestion of lead particulates.

No smoking is permitted on or adjacent to the firing point.

5.6 PROTECTIVE CLOTHING

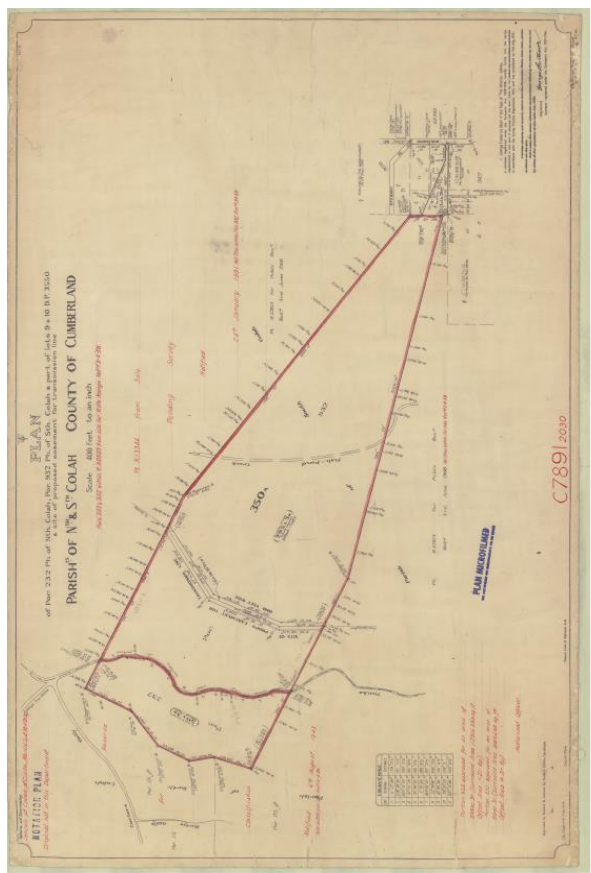
Appropriate clothing must be worn at all times. Clothing must provide protection to the shooter but not hinder the safe operation of the firearms being used.

Appropriate footwear is to be worn at all times.

5.7 FIRST AID KIT

First aid kits are located in the club houses.

HORNSBY RIFLE RANGE SAFETY TEMPLATE (NATO 1956)



N.S.R.T.S.C.M.A.Inc.
North Shore Regional Target Shooting Complex Management Association Inc.

Notes:

SECTION 6 – EMERGENCY CONTACTS

6.1 EMERGENCY SERVICE PHONE NUMBERS

The following are non-emergency contact numbers. For emergencies call **000**.

Hospital (Hornsby Hospital, Palmerston Rd. Hornsby) **02 9477 9123**

Fire Brigade (Hornsby Fire Station, 2 Bridge Rd Hornsby) **02 9476 4318**

NSW Police (Hornsby Police Station, 292 Pacific Highway Hornsby) **02 9476 9799**

State Emergency Service (Sydney Northern Region, Hornsby) **02 9987 3000**

6.2 N.S.R.T.S.C.M.A. CONTACTS

For administrative and maintenance queries only. Note that for details of specific shooting events, contact the relevant approved shooting organisation.

Range Mobile No.:	0417 201 606
-------------------	---------------------

The following are the contact details for Office Bearers (2019-20):

President –	Brian Kirkman bki86995@bigpond.net.au	0412 454 634
Vice-President -	Drew Thornton drewthornton@optusnet.com.au	0409 396 612
Secretary -	Alastair McDougall alastair.mcdougall@gmail.com	0412 533 012
Treasurer –	John Alp j_alp@internode.on.net	